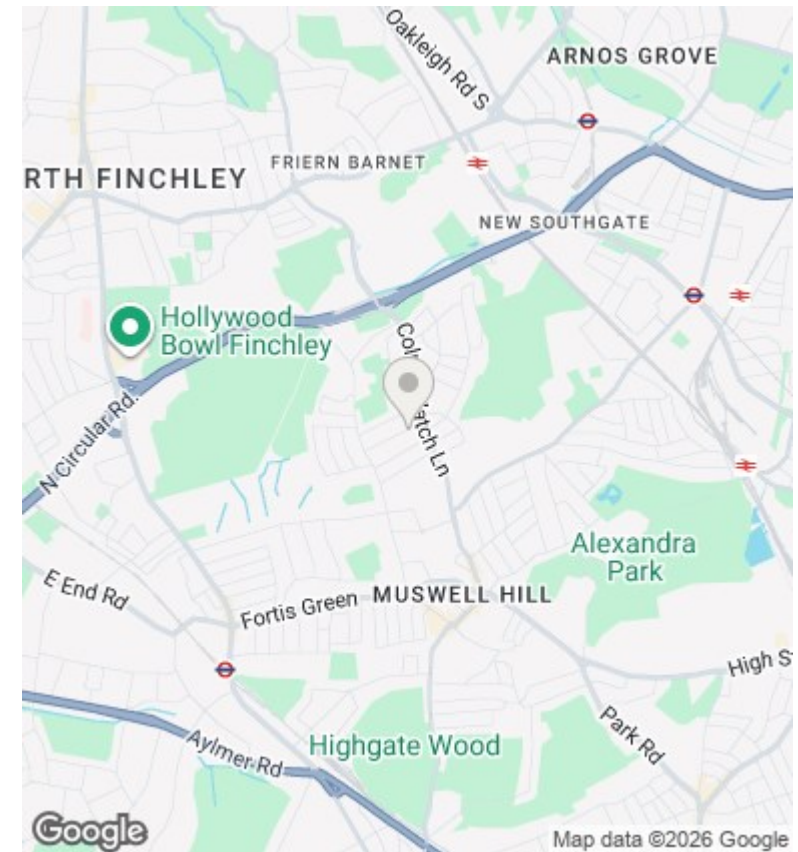
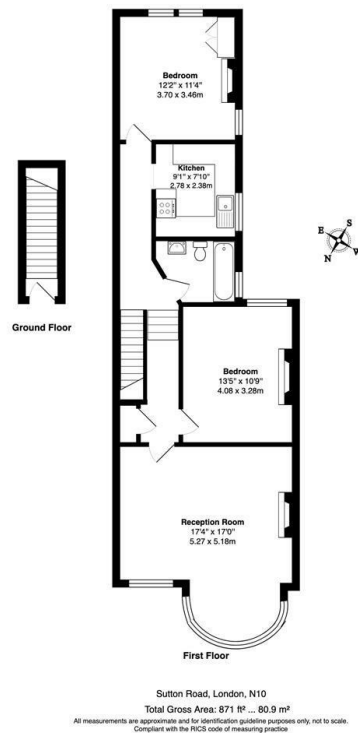




Sutton Road, London, N10 1HJ

£2,000 Per Calendar Month

- Spacious and well-presented two double bedroom first-floor flat
- Generous bedrooms with double wardrobes to one room and built-in alcove storage to the second
- Available on long term tenancy
- Available NOW
- Set within an attractive period conversion
- Located in a sought-after residential area
- Unfurnished
- Bright and airy throughout with charming period features
- Close to excellent local amenities and transport links
- Council tax band D



Directions

Viewings

Viewings by arrangement only. Call 02083499000 to make an appointment.

Council Tax Band

D

EPC Rating:

Energy Efficiency Rating		
	Current	Potential
Very energy efficient - lower running costs		
(92 plus) A		
(81-91) B		
(69-80) C		
(55-68) D		
(39-54) E		
(21-38) F		
(1-20) G		
Not energy efficient - higher running costs		
England & Wales	EU Directive 2002/91/EC	